

# HARTWELL MEDICAL

*Creating Quality Products for Life*

Patient Handling • Vacuum Mattresses and Splints • Airway Management



*The Art of Our Innovations*

Product Guide



# About Hartwell Medical

For more than 35 years we have seen significant technological advances in the emergency care industry and are proud to have played a key role in the research and development of improved patient care equipment and techniques.

It all started in 1989 with a new splint designed to treat extremity injuries using vacuum technology instead of air pressure. Today, Hartwell Medical manufactures the two best-selling vacuum splint products in the industry; the well known EVAC-U-SPLINT® and the new, semi-disposable FASPLINT®. Trauma specialists throughout the world prefer these products because vacuum immobilization significantly reduces tissue, nerve and vessel damage, resulting in shorter hospital stays and reduced health care costs for patients.

In 1999, Hartwell Medical introduced the award-winning CombiCarrier®, the first combination backboard and scoop stretcher. This innovative device saved rescuers valuable budget dollars and storage space by combining 2 products into 1. Today, the next generation CombiCarrierII® is even thinner, lighter, and stronger than the original and continues to be the ideal patient handling and transfer device.

Since our inception, Hartwell Medical has been known for innovative design, quality craftsmanship and exceptional customer service. All of our products are subjected to real-life field tests to ensure they meet our high clinical standards and your ever-changing needs. Should you have any questions about the use or care of our products, we will be happy to help. Hartwell Medical is continually working to provide you with quality products for life.



## Customer Service Hours:

Monday - Friday

8:00 am - 4:30 pm PST

(760) 438-5500

(800) 633-5900

[customerservice@hartwellmedical.com](mailto:customerservice@hartwellmedical.com)



## THE ULTIMATE Collection Bag



**The BioHoop® is a versatile and leak-proof bag that solves your waste containment needs and much more**

Featuring the largest opening of any compact collection bag, the BioHoop makes your job easier and reduces your clean-up time. Semi-rigid rim keeps the bag open, providing a large target for the patient that will not collapse. Large 8" x 13-3/4" bag holds up to 3 liters. Long, protective cuff on both sides protects your hands from fluids. Cinchable strap allows instant closure with a quick pull, eliminating spills and odor. Unique hook allows the bag to hang within easy reach on ambulance cot rails, hospital beds or wheelchairs.

Clear front with graduated markings makes it easy for hospital personnel to examine contents. Tamper resistant bag is perfect for emesis, urine, blood spills, soiled dressing, patient belongings like jewelry and cell phones, evidence or other waste material.



Emesis



Dressings & Scene  
Garbage



Patient Belongings  
& Evidence



Medications



Urine



BioHoop with Hook Part Number BH 1100H  
BioHoop without Hook Part Number BH 1100



*Easily and safely manage scene garbage or patient belongings quickly and efficiently.*



### INNOVATIVE DESIGN

Semi-rigid rim keeps the bag open, then closes instantly with a zip of the strap.



### QUALITY MATERIALS

Long, protective cuff at the rim protects your hands from body fluids.



### MORE THAN JUST A PLASTIC BAG

The patient's personal items can be secured in the tamper-resistant bag and attached to their clothes with the unique hook clip to ensure nothing is lost.



### SMART FEATURES

Clear front makes it easy to examine the contents and helps comply with OSHA 29 CFR Part 1910.1030.

**HARTWELL MEDICAL**





# CombiCarrierII®

## Scoop Stretcher & Extrication Board

### SMR PROTOCOL BASED Patient Handling



The CombiCarrierII® functions as a scoop-type stretcher minimizing patient movement with no logrolling required and also serves as an improved extrication board during vehicle extrication situations. The CombiCarrierII meets the latest Spinal Motion Restriction (SMR) protocols providing optimal patient handling in the most extreme environments including water rescue.

The concave patient surface limits lateral movement of the victim providing more secure stabilization. The split-litter design also allows for easy removal once the patient is on the ambulance cot or delivered to the emergency department. Built to take a beating, many of the original units are still in operation with zero failures in over 18 years.

The innovative design of the CombiCarrierII provides emergency medical and rescue personnel with two products in one, saving valuable storage space, weight and critical budget dollars. **Comes with an industry leading 5-year warranty.**



*Safely extricate and transfer a patient to the cot. The CombiCarrierII is easily removed eliminating the loss of your valuable equipment.*



#### QUICK AND EASY

Simple intuitive design minimizes training of all EMS, hospital and athletic training personnel.



#### AUTO-LOCK LATCH SYSTEM

Off-set sturdy latch is built for reliability and durability making it much easier to apply and remove the device under patient load.



#### VERSATILE PATIENT TRANSFER

Can be separated at either end or split into two halves, eliminating unnecessary patient movement and making it ideal for patients with suspected hip, pelvic and spinal injuries.



#### CONCAVE PATIENT SURFACE

Provides excellent lateral support with neutral alignment. Minimizes movement of patients spine during lifting and transferring. Continuous inner edge eliminates pinching.



#### SEAMLESS PLASTIC CONSTRUCTION

No rivets, drive screws or roll pins. High density polyethylene is easily cleaned and disinfected. Helps comply with CDC and OSHA guidelines.



#### X-RAY COMPATIBLE

X-ray compatible. Easy to remove for highly detailed diagnostic imaging requirements.



# CombiCarrier II®

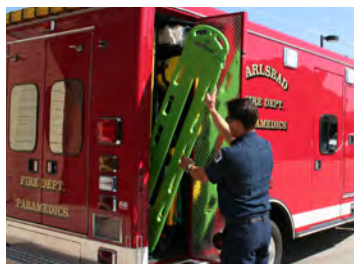
## Scoop Stretcher & Extrication Board



Functions Like A Scoop Stretcher



Tapered Ends To Simplify Extrication



Fits In A Standard Backboard Compartment



Can Be Easily Separated At Either End

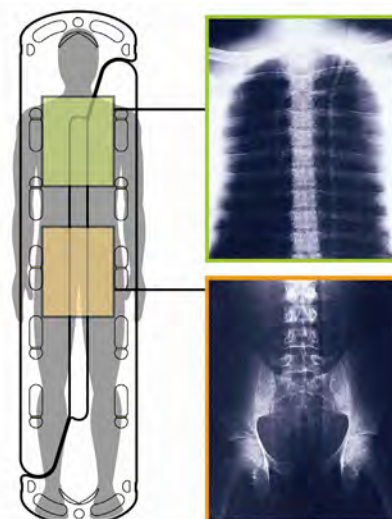


Optional Head Immobilizer Available  
Model CC 3400H

### SPECIFICATIONS - Model CC 2200P and CC 2200P-OD

Weight	15.6 lbs. (7.1 kg)
Dimensions	73.50"L x 16.50"W x 2.19"D (186.7 cm x 41.9 cm x 5.6 cm D)
Load Capacity	450 lbs. (205 kg)
Shell	High density polyethylene
Pins	Fiberglass
Filling	Urethane foam
Latches	Aluminum, stainless steel

For optional ordering configurations please see our website. Tactical version available in olive drab.



### X-Ray Compatible

Clear center section provides unobstructed A/P view of patients spine. Splint design allows for simple, easy removal and application for X-Ray examination.



Contact your local authorized dealer or visit us online at [www.HartwellMedical.com](http://www.HartwellMedical.com)  
For detailed product information, training and education materials please visit our website

## HARTWELL MEDICAL



# EVAC-U-SPLINT®

## Extremity Splint Kit

### VERSATILE & ADAPTABLE Vacuum Splint

**Designed to fit the patient, instead of  
manipulating the patient to fit the splint**

The EVAC-U-SPLINT® provides a solution for almost every conceivable splinting situation. From dislocated shoulders to angulated wrist fractures, simply form it around the injured area, evacuate the air using the quick connect MaxiValve™ and you're done!

Vacuum technology reduces the potential for nerve, tissue and vessel damage. These splints can be used for leg fractures, dislocated shoulders, knee injuries, wrist fractures, infant and pediatric immobilization, hip stabilization, padding under the knees, temporary cervical support, and much, much more.

You can be transporting your patient to the hospital while other rescuers are still bending, padding and struggling to apply traditional fixation splints. The number of uses for the EVAC-U-SPLINT is limited only by the creativity of the rescuer.



#### QUICK AND EASY

Molds to exact shape of injury site without applying circumferential pressure. Fully evacuates in seconds.



#### INNOVATIVE VALVE

Proprietary design provides secure 100% seal in seconds. No pump required for valve release. Guaranteed for the life of the splint.



#### DESIGNED TO LAST

Durable, easy-to-clean fabric provides years of reliability. The EVAC-U-SPLINT is our most long-lasting product.



#### EXCELLENT VALUE

Low cost of ownership per use over ladder, rigid foam and cardboard splints that require padding and roller gauze.



#### ANATOMICAL DESIGN

Tapered shape in 3 sizes allows application on virtually any body part or patient size. Individual replacement splints are available.



#### X-RAY COMPATIBLE

Constructed of flexible fabric and a non-magnetic valve that are X-ray compatible.

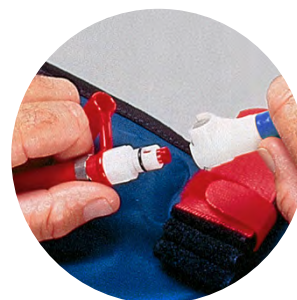


# EVAC-U-SPLINT®

## Extremity Splint Kit

Evacuation time is less than 9 seconds using the durable, very efficient all-aluminum manual pump. Includes dual-wall braided hose.

Features the simple, and intuitive MaxiValve™ that is extremely reliable and is guaranteed for the life of the product. Provides quick connect and disconnect. Includes protective leashed cap.



### SPECIFICATIONS

MODEL	SIZE	WEIGHT (SPLINTS ONLY)	DIMENSIONS
EV 101	S	0.5 lbs (0.2 kg)	19.5" x 13" x 1" (50cm x 33cm x 2.5cm)
EV 102	M	1.0 lbs (.5 kg)	27.5" x 20" x 1" (70cm x 51cm x 2.5cm)
EV 103	L	2.2 lbs (1.0 kg)	40" x 30" x 1" (102cm x 76cm x 2.5cm)
EV 3000	Kit	6.4 lbs (2.9 kg)	24" x 11" x 11" (61cm x 28cm x 28cm)

EV 3000 kit includes S, M, L splints, carry case and compact aluminum pump.

Operating Temperature	-30°F to 150°F (-34°C to 66°C)
Fabric	Vinyl/Polyester laminate
Filling	Polystyrene beads
Valve	Non-magnetic, self-sealing
Closures	Hook and loop or Delrin side-release buckles
Carry Case	Polyester
Vacuum Pump	Aluminum cylinder, stainless steel shaft

For optional ordering configurations please see our website.

NSN-6515 01 398 5455 (EV 3000)

EVAC-U-SPLINT kit comes with small, medium and large splints, compact pump and carry case. Available with hook and loop or side-release buckle straps.



Contact your local authorized dealer or visit us online at [www.HartwellMedical.com](http://www.HartwellMedical.com)  
For detailed product information, training and education materials please visit our website

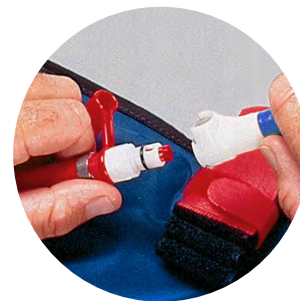
## HARTWELL MEDICAL



# EVAC-U-SPLINT®

## Adult Vacuum Mattress

Evacuation time is less than 25 seconds using the durable, very efficient all-aluminum manual pump with foot stirrup. Includes dual-wall braided hose.



Features the simple, and intuitive MaxiValve™ that is extremely reliable and is guaranteed for the life of the product. Provides quick connect and disconnect. Includes protective leashed cap.



### SPECIFICATIONS

Weight:	
Mattress Only	12.1 lbs (5.5 kg) Model MT 1075-6
Mattress, Case, Pump	16.8 lbs. (7.6 kg) Model MT 3075-6
Dimensions:	
Unfolded	78.75"L x 29.5"W x 2.5"D (200 cm x 75 cm x 6.4 cm)
In Carry Case	31.5"L x 28"W x 6"D (80 cm x 71 cm x 15 cm)
Operating Temperature	-30°F to 150°F (-34°C to 66°C):
Load Capacity	350 lbs. (159 kg)
Fabric	Vinyl/polyester laminate
Filling	Polystyrene beads
Stiffener	Birch Plywood
Valve	Non-magnetic, self-sealing
Closures	Delrin side-release buckles
Carry Case	Polyester
Vacuum Pump	Aluminum cylinder with foot stirrup, stainless steel shaft

Features easy-to-apply color coded side-release buckles offering rapid and secure patient restraint.



For optional ordering configurations please see our website.

NSN-6515 01 408 7539 (MT 3075-6)



Contact your local authorized dealer or visit us online at [www.HartwellMedical.com](http://www.HartwellMedical.com)  
For detailed product information, training and education materials please visit our website

## HARTWELL MEDICAL



# EVAC-U-SPLINT®

## Adult Vacuum Mattress

### VERSATILE & ADAPTABLE Full Body Stabilization



### Provides continuous spinal support and patient comfort in one complete package

The EVAC-U-SPLINT® vacuum mattress provides fast, effective and comfortable immobilization for the entire patient. Molding to the specific contours of the patient's body without applying pressure, the vacuum mattress provides uniform support and reduces pressure point tenderness.

The EVAC-U-SPLINT mattresses has six large padded handles secured to the perimeter of the mattress which provide improved security when moving and transferring a patient and also allows for rescuers to share handles when handing off a patient in tight quarters. The EVAC-U-SPLINT is filled with thousands of polystyrene beads which act as a thermal insulator to help maintain the patient's core body temperature decreasing the potential for hypothermia.



*Optional backpack carry case available*



#### QUICK AND EASY

Molds to each patient's unique body contours. Patient can be transported in a supine, knees flexed or a 30° elevated torso position.



#### INNOVATIVE VALVE

Includes quick connect and disconnect MaxiValve™. It is fast, effective and easy to use, even with gloves on. Audible click ensures a positive connection, even in low light.



#### SUPERIOR IMMOBILIZATION

Distributes body weight evenly eliminating specific pressure points. Ideal for injuries of the spine, back, hips, pelvis or trauma patients with multiple fractures.



#### VALUE AND PERFORMANCE

Integrated slats provide maximum support and the simple rescue-type strap system insures the security of the patient even if transported on their side for airway maintenance.



#### DESIGNED TO LAST

Made from high quality, extremely durable materials that are easy-to-clean and withstand years of use. Chosen for use in both summer and winter Olympic Games.



#### X-RAY COMPATIBLE

X-ray compatible.

**HARTWELL MEDICAL**

# EVAC-U-SPLINT®

## Pediatric Vacuum Mattress

### SECURE AND COMFORTABLE Full Body Stabilization

**Provides continuous spinal support and patient comfort in one complete package**



The EVAC-U-SPLINT® Pediatric Mattress is designed to mold to the child's specific body contours, providing a secure cradle that is both supportive and comfortable. The child is held securely and comfortably in neutral alignment reducing the struggling, fear and anxiety common with pediatric patients. The EVAC-U-SPLINT Pediatric Mattress has four large built-in padded handles making it easy to lift and carry. It has been designed to accommodate children in the 2-10 year age group.

The uncomplicated design enables fast, accurate application of the Pediatric Mattress. Conforming beads allow quick positioning of the patient in neutral alignment on-scene. No additional blankets or pads are necessary and there are no parts to lose. The child is held securely and comfortably without unnecessary pressure, thus reducing child anxiety during transport.



The compact EVAC-U-SPLINT Pediatric Mattress Kit easily stows inside emergency vehicle storage areas and in external equipment compartments



#### **RAPID FITTING**

#### **QUICK AND EASY**

Molds to a child's unique body contours. Children can be transported in a supine, or a 30° elevated torso position.



#### **INNOVATIVE DESIGN**

#### **INNOVATIVE VALVE**

Includes quick connect and disconnect MaxiValve™. It is fast, effective and easy to use, even with gloves on. Audible click ensures a positive connection, even in low light.



#### **VERSATILE**

#### **SUPERIOR IMMOBILIZATION**

Distributes body weight evenly eliminating specific pressure points. Ideal for injuries of the spine, back, hips, pelvis or trauma patients with multiple fractures.



#### **REUSABLE EQUIPMENT**

#### **VALUE AND PERFORMANCE**

Integrated slats provide maximum support and the simple rescue-type strap system insures stability and security of the patient even if transported on their side for airway maintenance.



#### **RUGGED CONSTRUCTION**

#### **DESIGNED TO LAST**

Made from high quality, extremely durable materials that are easy-to-clean and withstand years of use.



#### **X-RAY COMPATIBLE**

#### **X-RAY COMPATIBLE**

X-ray compatible.

**HARTWELL MEDICAL**

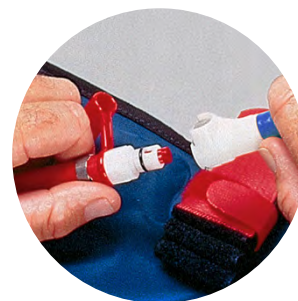


# EVAC-U-SPLINT®

## Pediatric Vacuum Mattress



Evacuation time is less than 20 seconds using the durable, very efficient all-aluminum manual pump with foot stirrup. Includes dual-wall braided hose.

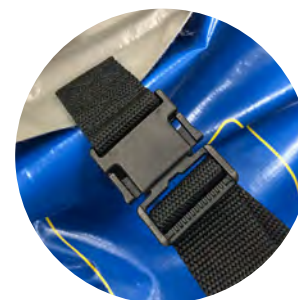


Features the simple, and intuitive MaxiValve™ that is extremely reliable and is guaranteed for the life of the product. Provides quick connect and disconnect. Includes protective leashed cap.

### SPECIFICATIONS

Weight:		
Mattress Only	5.0 lbs (2.3 kg)	Model PD 1000
Mattress, Case	6.2 lbs (2.8 kg)	Model PD 1500
Mattress, Case, Pump	9.2 lbs (4.2 kg)	Model PD 3000
Dimensions:		
Unfolded	50"L x 20.0"W x 2"D (127 cm x 51 cm x 5 cm)	
In Carry Case	23.0"L x 20"W x 4"D (58 cm x 51 cm x 10 cm)	
Operating Temperature	-30°F to 150°F (-34°C to 66°C):	
Load Capacity	75 lbs. (34 kg)	
Fabric	Vinyl/polyester laminate	
Filling	Polystyrene beads	
Stiffener	Birch Plywood	
Valve	Non-magnetic, self-sealing	
Closures	Delrin side-release buckles	
Carry Case	Polyester	
Vacuum Pump	Aluminum cylinder with foot stirrup, stainless steel shaft	

Features side-release buckles offering rapid and secure patient restraint



For optional ordering configurations please see our website.

NSN-6515 01 408 7539 (PD 3000)



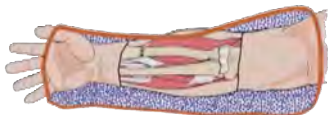
Contact your local authorized dealer or visit us online at [www.HartwellMedical.com](http://www.HartwellMedical.com)  
For detailed product information, training and education materials please visit our website

## HARTWELL MEDICAL

# FASPLINT®

## THE SEMI-DISPOSABLE Vacuum Splint

The FASPLINT® provides optimum stabilization at an affordable price. Unlike air and board splints, it uses vacuum technology to mold to the exact shape of the injury site without applying circumferential pressure. Reduces potential of nerve, tissue and vessel damage.



Can be used for leg fractures, dislocated shoulders, knee injuries, wrist fractures, infant and pediatric immobilization, hip support, padding under the knees, temporary cervical support, and more. This semi-disposable vacuum splint is ideal for the really messy trauma call or when equipment retrieval is difficult. Can be disinfected and reused.



### QUICK AND EASY

Reduces on-scene time with easy and quick application on patients. Molds to exact shape of injury without applying circumferential pressure.



### ANATOMICAL DESIGN

Tapered shape in 3 sizes allows application on virtually any body part or patient size. Replacement splints are available.



### X-RAY COMPATIBLE

X-Ray compatible.



### SAVES MONEY

Lower cost of ownership per use over cardboard, padding and roller gauze with just a few uses. Also, makes it disposable when necessary.



# FASPLINT®

## THE SEMI-DISPOSABLE Vacuum Splint



### SPECIFICATIONS

MODEL	SIZE	WEIGHT	DIMENSIONS
FS 801-10	S	0.5 lbs (0.2 kg)	19.5" x 14" (50cm x 33cm)
FS 802-10	M	1.0 lbs (.5 kg)	27.5" x 20" (70cm x 51cm)
FS 803-10	L	2.2 lbs (1.0 kg)	40" x 30" (102cm x 76cm)
FS 9000 RC	Kit	6.0 lbs (2.7 kg)	3 Splint Kit, compact aluminum pump, carry case
FS 9000 RCPL	Kit	5.0 lbs (2.3 kg)	3 Splint Kit, economy pump, carry case

\*FASPLINTs are available from most authorized dealers as individual splints or 10 per box



Economy pump included with FS-9000 RCPL kit.

Operating Temperature	-30°F to 150°F (-34°C to 66°C):
Fabric	Vinyl/Polyester laminate
Filling	Polystyrene beads
Valve	Non-magnetic, push pull
Carry Case	Polyester
Compact Vacuum Pump	Aluminum cylinder, stainless steel shaft and tapered tip
Economy Vacuum Pump	Plastic components with tapered tip

For optional ordering configurations please see our website.



Contact your local authorized dealer or visit us online at [www.HartwellMedical.com](http://www.HartwellMedical.com)  
For detailed product information, training and education materials please visit our website

## HARTWELL MEDICAL

# FASPLINT HALFBACK®

## Compact Vacuum Splint



Features the simple, and intuitive MaxiValve™ that is extremely reliable and is guaranteed for the life of the product. Provides quick connect and disconnect. Includes protective leashed cap.



### QUALITY & PERFORMANCE

Molds to each patient's unique body contours with an evacuation time less than 20 seconds.



### SPECIFICATIONS

Weight:	
Splint Only	3 lbs (1.6 kg) FSH 1000
Splint and Case	6 lbs (2.7 kg) FSH 1500
Splint, Case, Compact Pump	6.8 lbs (3.1 kg) FSH 3000
Dimensions:	
Unfolded	40.5"L x 29.5"W x 1.5"D (103 cm x 75 cm x 4 cm)
In Carry Case	2.5"L x 12.5"W x 6.75"D (57 cm x 32 cm x 7 cm)
Operating Temp	-30°F to 150°F (-34°C to 66°C):
Fabric	Vinyl/Polyester laminate
Filling	Polystyrene beads
Stiffener	Birch Plywood, Polyethylene
Valve	Non-magnetic, self sealing
Carry Case	Polyester
Compact Vacuum Pump	Aluminum cylinder, stainless steel shaft

For optional ordering configurations please see our website.



May be used with or without a C-collar as dictated by your local medical protocols.



Contact your local authorized dealer or visit us online at [www.HartwellMedical.com](http://www.HartwellMedical.com)  
For detailed product information, training and education materials please visit our website

## HARTWELL MEDICAL



# FASPLINT HALFBACK®

Compact Vacuum Splint

SMR PROTOCOL BASED  
Stabilization



## Spinal Splinting in a Compact, Comfortable and Cost-Effective Vacuum Splint

The FASPLINT HALFBACK® compact vacuum splint stabilizes each patient in the position most comfortable for them, making it ideal for back injuries and geriatric care. The FASPLINT HALFBACK is a smaller, more compact design which is budget friendly and reduces storage requirements.

Provides full spinal splinting from the head to the hips. The FASPLINT HALFBACK mattress is designed to alleviate pressure point pain and vastly increases patient comfort during transport on various patient handling devices like the CombiCarrierII®, a flat backboard or a scoop stretcher. Polystyrene beads insulate the patient to help prevent hypothermia.



### COMPACT SPINAL SPLINTING

Provides spinal splinting from the head to the hips and can be used with a variety of patient handling devices. Stabilizes the entire patient as one unit eliminating the potential for unnecessary movement.



VERSATILE

### SUPERIOR COMFORT

Significantly reduces or eliminates the pressure point tenderness and pain often seen in patients secured to a backboard. Dampens vibrations from irregular road conditions and helps emergency personnel stabilize a patient in a position of comfort during transport to the hospital.



RUGGED  
CONSTRUCTION

### DESIGNED TO LAST

Made from high quality, extremely durable materials that are easy-to-clean and withstand years of use.



REUSABLE  
EQUIPMENT

### VALUE AND PERFORMANCE

Using supple vinyl on the front and a heavier grade vinyl on the backside for extended durability, this splint is designed to be both budget-friendly and reusable.



X-RAY  
COMPATIBLE

### X-RAY COMPATIBLE

X-ray compatible.

**HARTWELL MEDICAL**

# FASPLINT FULLBODY®

Vacuum Splint

SMR PROTOCOL BASED  
Stabilization



Full Spinal Splinting

## Continuous Spinal Motion Restriction and Patient Comfort In a Complete Budget Friendly Package

The FASPLINT FULLBODY® full-length vacuum splint stabilizes each patient in the position most comfortable for them, making it ideal for back injuries and geriatric care. The FASPLINT FULLBODY provides continuous full body support and enables the patient's legs to be supported in the flexed position for additional comfort during transport.

The mattress is designed to alleviate pressure point pain and vastly increases patient comfort during transport on various patient handling devices like the CombiCarrierII® or a backboard. Polystyrene beads insulate the patient to help prevent hypothermia. The economical, tapered design accommodates your budget and your storage needs.



*Ideal when transporting seniors, patients with kyphosis whose spine curvature does not allow them to lie flat, patients with hip fractures or those who are more comfortable with their knees flexed during transport.*



### SPINAL SPLINTING REDEFINED

Provides spinal splinting from the head to the hips and can be used with a variety of patient handling devices. Supports and stabilizes the entire patient as one unit from the head to the feet eliminating the potential for unnecessary movement.



### SUPERIOR COMFORT

Significantly reduces or eliminates the pressure point tenderness and pain often seen in patients secured to a backboard. Dampens vibrations from irregular road conditions and helps emergency personnel stabilize a patient in a position of comfort during transport to the hospital.



### DESIGNED TO LAST

Made from high quality, extremely durable materials that are easy-to-clean and withstand years of use.



### VALUE AND PERFORMANCE

Using supple vinyl on the front and a heavier grade vinyl on the backside for extended durability, this splint is designed to be both budget-friendly and reusable.



### X-RAY COMPATIBLE

X-ray compatible.

**HARTWELL MEDICAL**



# FASPLINT FULLBODY®

## Vacuum Splint



### QUALITY & PERFORMANCE

Molds to each patient's unique body contours with an evacuation time less than 25 seconds.

Features the simple, and intuitive MaxiValve™ on each end, that is extremely reliable and is guaranteed for the life of the product. Provides quick connect and disconnect. Includes protective leashed cap.

FSF 3000 Kit includes a durable, very efficient all-aluminum manual pump with foot stirrup. Includes dual-wall braided hose. Compact pump also available.



### SPECIFICATIONS

Weight:		
Splint Only	7.0 lbs (2.7 kg)	FSF 1000
Splint and Case	8.6 lbs (3.9 kg)	FSF 1500
Splint, Case, Standard Pump	11.4 lbs (5.2 kg)	FSF 3000
Splint, Case, Compact Pump	10.6 lbs (4.8 kg)	FSF 3000C
Dimensions:		
Unfolded	75.5"L x 29.5"W x 2.0"D (192 cm x 75 cm x 5 cm)	
In Carry Case	23"L x 24"W x 5"D (58 cm x 61 cm x 13 cm)	
Operating Temp	-30°F to 150°F (-34°C to 66°C):	
Fabric	Vinyl/Polyester laminate	
Filling	Polystyrene beads	
Stiffener	Birch Plywood, Polyethylene	
Valve	Non-magnetic, self sealing	
Carry Case	Polyester	
Standard Vacuum Pump	Aluminum cylinder with foot stirrup, stainless steel shaft	

For optional ordering configurations please see our website.



May be used with or without a C-collar as specified by your local medical protocols.



Contact your local authorized dealer or visit us online at [www.HartwellMedical.com](http://www.HartwellMedical.com)  
For detailed product information, training and education materials please visit our website

## HARTWELL MEDICAL

# BriteView<sup>®</sup>

## COLOR-CODED DISPOSABLE LED Laryngoscope Blade System



Available in Miller and Macintosh sizes



### Features and Benefits

- **Stainless Steel From Tip To Heel Prevents Flexing Or Breaking Under Stress**
- **Color-Coded For Instant Size Recognition**
- **Single Patient Use Prevents Cross Contamination**
- **Eliminates Cleaning Costs**
- **Super Bright LED Light Gives Maximum Visibility**
- **Tear-Pack Is Easy To Open With Gloves On**
- **Fits All Standard Handles**
- **Available In Miller And Macintosh Styles**

MODEL	DESCRIPTION
LB 51MAC1-DS	Macintosh 1 - Pink
LB 51MAC2-DS	Macintosh 2 - Yellow
LB 51MAC3-DS	Macintosh 3 - Orange
LB 51MAC4-DS	Macintosh 4 - Lime Green
MODEL	DESCRIPTION
LB 51MIL0-DS	Miller 0 - White
LB 51MIL1-DS	Miller 1 - Pink
LB 51MIL2-DS	Miller 2 - Yellow
LB 51MIL3-DS	Miller 3 - Orange
LB 51MIL4-DS	Miller 4 - Lime Green







# REPLACEMENT PARTS AND Accessories



MaxiValve Female Coupling



Adapter for FASPLINT Pump  
to MaxiValve



MaxiValve O-Ring Kit



MaxiValve Replacement Kit



MaxiValve Portable Suction  
Adapter



MaxiValve Retrofit Kit



Repair Kit for Vacuum Splints  
and Mattresses



Patch Kit for Vacuum Splints  
and Mattresses



FASPLINT Tapered Adapter



EVAC-U-SPLINT Adult Mattress  
Patient Restraint Strap



Replacement Carry Cases



Replacement Pumps

[www.HartwellMedical.com](http://www.HartwellMedical.com)

Products are subject to change without notice.  
Please be sure to contact your local authorized dealer for the latest product information.

**HARTWELL MEDICAL**